



TOLUNAY-WONG
ENGINEERS

- ✓ Geotechnical Services
- ✓ Geophysical Services
- ✓ Construction Materials Testing
- ✓ Environmental Field Services
- ✓ Deep Foundation Services

TOLUNAY-WONG ENGINEER

BEST OF THE BEST – 2016, 2020,

NICK VASTAKIS, SVP OF OPERATIONS & SALES

(713) 875-7094

NICKV@TWEINC.COM

DO ALL THESE TROPHIES MAKE ME LOOK FAT?





At Tolunay-Wong Engineers, we rely heavily on our field crews to safely and accurately collect field data to be brought back to our labs for analysis. The types of field efforts to collect these samples can differ substantially, including the methods in which they are collected.

If the engineering OR project management group fails to accurately communicate with the field crew on the already complex task of sample collection, it can lead to unnecessary risks in safety and compromise the successful execution of the entire project.

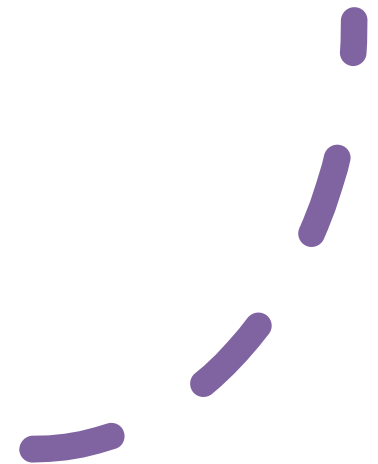
Our Best Practices



- PRESO
- Take 5 for Safety
- Safety Reports App

PRESO

PROJECT READINESS EXECUTION SIGN-OFF





PRESO

The PRESO form was created out of the need to bridge the gap from Project Managers to Field Crews.

PROJECT READINESS / EXECUTION SIGN-OFF

• Geotechnical & Environmental Field Programs

- TWE Project No. _____ Client: _____
- Project Name: _____

TASK STEPS

- 1. Proposal / Work Plan / Method Statement
- 2. Site Reconnaissance / Identification of Locations
- 3. Job-Specific Health & Safety Plan / Emergency Contacts
- 4. One Call Notification
- 5. Field Crew/Equipment/Tooling Confirmations
- 6. Safety Training / Certification Requirements
- 7. Job-Specific Daily Toolbox / Job Safety Analysis Forms
- 8. Equipment Inspection Forms / Safety Data Sheets
- 9. Daily Field Report / Log Forms
- 10. Review / Audit / Verify / Discuss

Responsible Party	Date
_____	_____
_____	_____
_____	_____
_____	_____
_____	_____
_____	_____
_____	_____
_____	_____
_____	_____
_____	_____

AUTHORIZATION

- Project Management
- Field Services Management
- Corporate Safety
- Project Principal

Name	Signature	Date
_____	_____	_____
_____	_____	_____
_____	_____	_____
_____	_____	_____

FIELD CREW ACCEPTANCE

- Safety Professional
- Technician
- Operator / Driller
- Assistant
- Assistant

Name	Signature	Date
_____	_____	_____
_____	_____	_____
_____	_____	_____
_____	_____	_____
_____	_____	_____



Tolunay-Wong Engineers, Inc.

PROJECT READINESS / EXECUTION SIGN-OFF


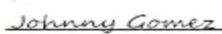
Geotechnical & Environmental Field Programs

TWE Project No. SEA Audit Client: _____
 Project Name: Tolunay-Wong Engineers SEA Audit 2024


TASK STEPS

	Responsible Party	Date
1. Proposal / Work Plan / Method Statement	<u>F.P</u>	<u>3/27</u>
2. Site Reconnaissance / Identification of Locations	<u>W.S</u>	<u>3/27</u>
3. Job-Specific Health & Safety Plan / Emergency Contacts	<u>W.S</u>	<u>3/27</u>
4. One Call Notification	<u>W.S</u>	<u>3/25</u>
5. Field Crew/Equipment/Tooling Confirmations	<u>W.S</u>	<u>3/27</u>
6. Safety Training / Certification Requirements	<u>W.S</u>	<u>3/27</u>
7. Job-Specific Daily Toolbox / Job Safety Analysis Forms	<u>W.S</u>	<u>3/27</u>
8. Equipment Inspection Forms / Safety Data Sheets	<u>W.S</u>	<u>3/27</u>
9. Daily Field Report / Log Forms	<u>W.S</u>	<u>3/27</u>
10. Review / Audit / Verify / Discuss	<u>F.P</u>	<u>3/27</u>

AUTHORIZATION

	Name	Signature	Date
Project Management	<u>Fadhel Peters</u>	_____	_____
Field Services Management	<u>Will Sique</u>	<u></u>	<u>3/27</u>
Corporate Safety	<u>Johnny Gomez</u>	<u></u>	<u>3/27</u>
Project Principal	<u>Fadhel Peters</u>	_____	_____

FIELD CREW ACCEPTANCE

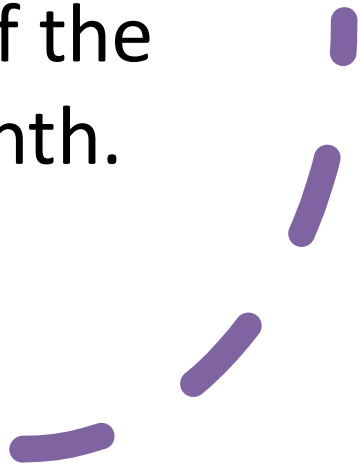
	Name	Signature	Date
Safety Professional	<u>Jan Perreras</u>	_____	_____
Technician	<u>Will Sique</u>	<u></u>	_____
Operator / Driller	<u>Keith Barge</u>	_____	_____
Assistant	<u>Tyler Walker</u>	_____	_____
Assistant	_____	_____	_____



A large red shape on the left side of the slide, resembling a stylized letter 'C' or a partial circle, with a rounded top and bottom edge.

TAKE 5 FOR SAFTEY

“Take 5s” are used as a platform to start every safety meeting. Employees are required to take 5 minutes to review monthly topics that correspond to appropriate training. Additionally, we cover 2 chapters of the MSHEP every month.

A decorative graphic on the right side of the slide consisting of several purple, curved, brush-stroke-like segments arranged in a partial arc.

Take 5 For Safety

Remediation & Drilling Safety

What is Remediation? Remediation is the process of cleaning up or removing environmental contamination or pollution. This can involve a variety of techniques, such as excavating and removing contaminated soil, treating the contamination in place, or sealing off the contamination to prevent further exposure.



Drilling safety refers to the measures taken to ensure the safety of workers and the general public during drilling operations, such as oil and gas drilling or water well drilling. This can include measures such as proper training and protective equipment for workers, using safe drilling techniques and equipment, and implementing emergency response plans.

Key steps you can take to prevent safety incidents during remediation activities:

1. **Plan ahead:** Before beginning any remediation work, it's important to develop a thorough plan that outlines the steps that will be taken and any potential hazards that may arise.
2. **Use the appropriate protective equipment:** Depending on the nature of the remediation work, you may need to use personal protective equipment (PPE) to protect yourself and others from potential hazards.
3. **Follow proper procedures:** Make sure to follow all established procedures and protocols during remediation activities to minimize the risk of accidents and injuries.
4. **Communicate effectively:** Good communication is crucial to ensuring the safety of all workers involved in the remediation.
5. **Monitor conditions:** Regularly check the site and equipment for any potential hazards, and take appropriate action if any are identified. This could include stopping work, fixing a problem, or evacuating the area.

1. Remediation always involves completely removing contaminated soil. **T or F**
2. Drilling safety only refers to the safety of workers. **T or F**
3. Proper training is **not** important for drilling safety. **T or F**
4. Protective equipment is **not** necessary for drilling safety. **T or F**
5. Remediation is only necessary for large-scale environmental contamination. **T or F**

Training Record _____

Jobsite/Facility _____

Print Name

Signature

Date

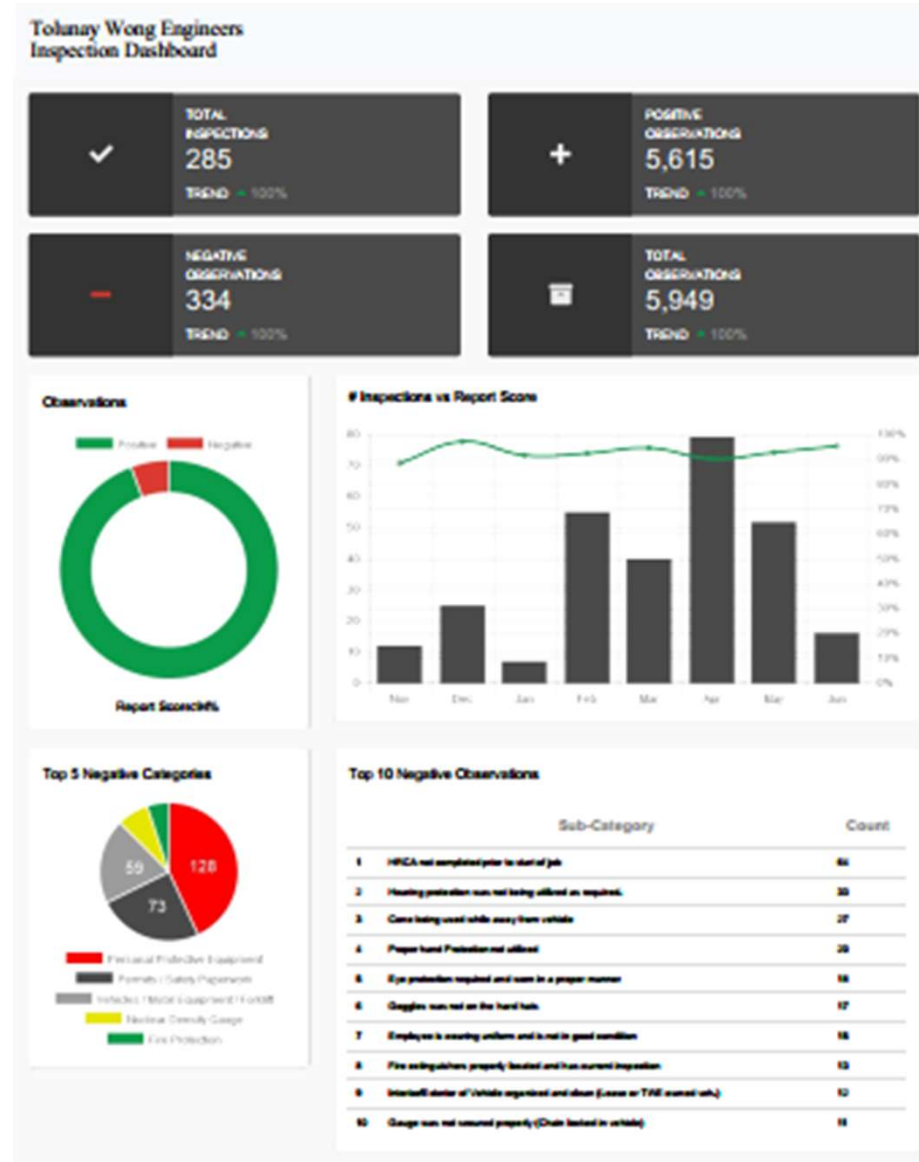


SAFETY
REPORTS
UNITED

We use Safety Reports United to manage our inspections, corrective actions, near misses and employee observations. The analytics and dashboard are used to track our safety performance improvement.

INSPECTIONS DASHBOARD

Tracking trends both positive and negative through our inspections help us to create safety performance goals and reward our people with TWE Bitcoin!



CAREFUL, NOW YOU'VE CUT YOUR SWITCH.

Corrective Action Tracking

Date Range: 5/17/2024 - 5/21/2024

Job Bank: Austin

Checklist: TWE Site Safety Inspection

Inspection Name	User (Inspector)	Category	Inspection Item	Notes	Company	Responsible Party	Inspection Date	Last Inspection Sent	Date Closed	Last Updated	Days Open	Status	Severity
Austin	Charles Osborne	Personal Protective Equipment	Hearing protection was not being utilized as required.		Austin (ATX)		05/20/2024	05/20/2024			1	Open	N/A
Austin	Charles Osborne	Nuclear Density Gauge	Gauge was not secured properly (Chain locked in vehicle)		Austin (ATX)		05/20/2024	05/20/2024			1	Open	N/A
Austin	Charles Osborne	Permits / Safety Paperwork	HRCA not completed prior to start of job		Austin (ATX)		05/20/2024	05/20/2024			1	Open	N/A

Action Items 3
 Total Open Items 3
 Total Pending Items 0
 Total Closed Items 0
 Percent Closed 0%

Avg. Days Open 1 All open/pending/closed items are included in this count
 Avg. Days to Close Only "Closed" action items are included in this count
 Avg. Days to Respond Takes into account back dating responses

ALL, RESULTS NEED TO BE PROSSESED WITH FIELD PERSONEL AND MANAGEMENT AND CLOSED OUT WITH SOME TYPE OF CORRECTIVE ACTION.



SECRET SAUCE?

ACCOUNTABILITY FROM EMPLOYEE TO EMPLOYEE



GEOTECHNICAL
ENGINEERING



ENVIRONMENTAL
SERVICES



CONSTRUCTION
MATERIALS TESTING



DEEP FOUNDATIONS
TESTING



GEOPHYSICAL
SERVICES

QUESTIONS?



GEOTECHNICAL
ENGINEERING



ENVIRONMENTAL
SERVICES



CONSTRUCTION
MATERIALS TESTING



DEEP FOUNDATIONS
TESTING



GEOPHYSICAL
SERVICES

DO ALL THESE TROPHIES MAKE ME LOOK FAT?

